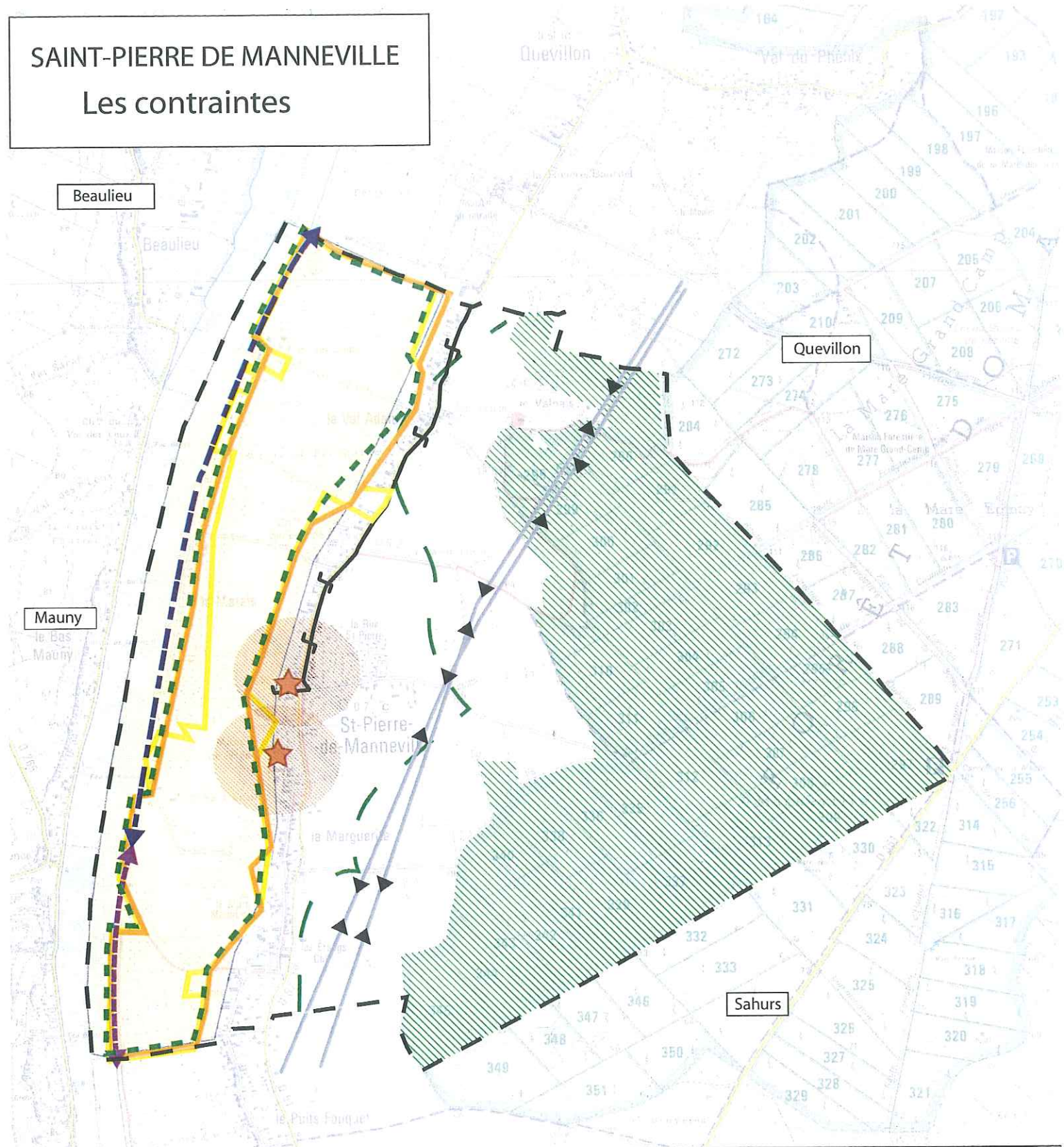







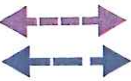



# SAINT-PIERRE DE MANNEVILLE

## Les contraintes



- |   |   |  |  |
|---|---|--|--|
|   | <b>ZNIEFF de type II n° 0233.000 "La Forêt de Roumare"</b><br>Bois ou forêt soumis au régime forestier  |  | <b>Natura 2000 n° FR2310044</b><br>"L'Estuaire et les Marais de la Basse Seine"    |
|  | Limite des 500 mètres   |  | <b>Natura 2000 n° FR2300123</b><br>"La Boucle de la Seine Aval"                    |
|   | <b>ZNIEFF de type I n° 0233.0001 "Le Marais d'Henouville a Sahurs"</b>  |  | <b>PT3</b> Servitudes relatives aux communications téléphoniques et télégraphiques |
|   | <b>I 4</b> Servitudes relatives à la distribution de l'énergie électrique   |  | <b>EL3</b> Servitudes de halage<br>Servitudes de marchepied                        |
|   | <b>AC 1</b> Servitudes de protection des monuments historiques classé<br><i>Eglise et façades et toitures du logis et de la chapelle du manoir de Villers</i> |  |  |
| Sur toute la commune:   | <b>AC 2</b> Servitudes de protection des sites et des monuments naturels<br><i>Parc Naturel de la Seine Normande "les Boucles d'Anneville"</i>                |  |  |